

Douglas St between Mckenzie Ave and Rogers Ave

April 01, 2019 To April 05, 2019



The data presented here is for information purposes only and should not be considered authoritative for construction, geotechnical, engineering, navigational, legal, or other site-specific uses. The information shared is owned by the Transportation Division of the Engineering Department at the District of Saanich. Accuracy is not guaranteed.

Start Date: 1-Apr-19
 Start Time: 0:07
 Station ID: C0019-01

Location 1: Douglas St between Mckenzie Ave and Rogers Ave

Note: McKenzie Ave and Rogers Ave

DATE:	April 1, 2019		April 2, 2019		April 3, 2019		April 4, 2019		April 5, 2019		WK AVG		WK AVG	HOURLY
	MON		TUE		WED		THURS		FRI				CH 1+2	%
Time:	NB	SB	NB	SB	NB	SB	NB	SB	NB	SB	NB	SB		
12-1 AM			9	5	9	5	7	6			8	5	14	0.5%
1-2 AM			1	1	2	1	1	1			1	1	2	0.1%
2-3 AM			4	3	2	0	3	2			3	2	5	0.2%
3-4 AM			2	2	1	3	2	2			2	2	4	0.1%
4-5 AM			8	9	7	8	10	7			8	8	16	0.5%
5-6 AM			6	27	6	26	7	21			6	25	31	1.0%
6-7 AM			19	63	20	70	20	55			20	63	82	2.8%
7-8 AM			63	125	59	127	59	140			60	131	191	6.4%
8-9 AM			161	195	150	195	156	188			156	193	348	11.7%
9-10 AM			47	95	62	86	71	97			60	93	153	5.1%
10-11 AM			72	73	51	85	67	68			63	75	139	4.7%
11-12 PM			80	78	61	64	79	67			73	70	143	4.8%
12-1 PM			80	73	71	68	70	68			74	70	143	4.8%
1-2 PM			72	71	76	69	82	61			77	67	144	4.8%
2-3 PM			124	123	123	119	98	109			115	117	232	7.8%
3-4 PM			109	89	122	127	143	111			125	109	234	7.9%
4-5 PM			170	109	156	77	150	122			159	103	261	8.8%
5-6 PM			144	118	143	100	134	88			140	102	242	8.1%
6-7 PM			104	92	88	91	81	86			91	90	181	6.1%
7-8 PM			65	62	74	54	90	83			76	66	143	4.8%
8-9 PM			63	35	61	38	60	46			61	40	101	3.4%
9-10 PM			43	21	45	28	47	26			45	25	70	2.4%
10-11 PM			40	16	38	17	35	21			38	18	56	1.9%
11-12 AM			21	11	29	16	27	18			26	15	41	1.4%
LANES			1507	1496	1456	1474	1499	1493			1487	1488	2975	100.0%
TOTAL			3003		2930		2992				2980			
	MON		TUE		WED		THURS		FRI		WK AVG			

PEAK HOUR					TOTAL VEHICALS-PEAK PERIODS		2 HOUR PEAK INTERVALS				
MAX. 7 - 9 am PEAK HOUR	348	⇒	11.7%	between 8-9 AM	1329	⇒	6 HR TOTAL	2 HR AM (7 - 9 AM)			
MAX. 7 - 11 am PEAK HOUR	348	⇒	11.7%	between 8-9 AM	1043	⇒	4 HR TOTAL	VEH / HR	VEH / 2HR	2 HR %	
MAX. 11 am - 1 pm PEAK HOUR	143	⇒	4.8%	between 12-1 PM				7-8 AM	191	539	18.1%
MAX. 11 am - 3 pm PEAK HOUR	232	⇒	7.8%	between 2-3 PM				8-9 AM	348		
MAX. 4 - 6 pm PEAK HOUR	261	⇒	8.8%	between 4-5 PM				2 HR NOON (11 - 1 PM)			
MAX. 3 - 6 pm PEAK HOUR	261	⇒	8.8%	between 4-5 PM				VEH / HR	VEH / 2HR	2 HR %	
								11-12 PM	143	286	9.6%
								12-1 PM	143		
								2 HR PM (4 - 6 PM)			
								VEH / HR	VEH / 2HR	2 HR %	
								4-5 PM	261	504	16.9%
								5-6 PM	242		

Douglas St between Mckenzie Ave and Rogers Ave

Northbound

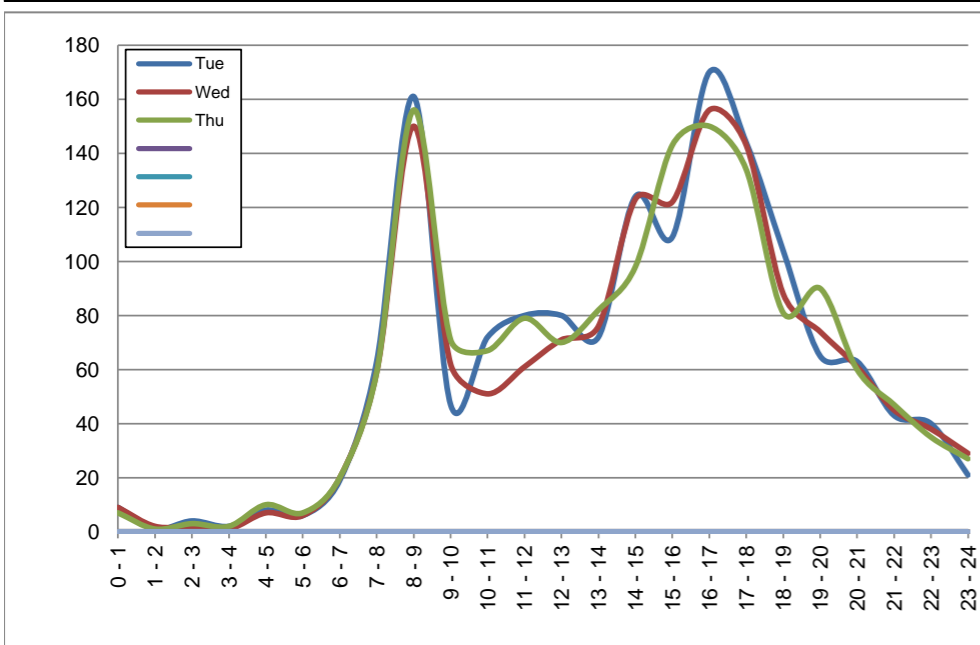
April 2, 2019 to April 4, 2019

Hourly Volumes

Time Period	Tue	Wed	Thu			
	Apr 2	Apr 3	Apr 4			
0 - 1	9	9	7			
1 - 2	1	2	1			
2 - 3	4	2	3			
3 - 4	2	1	2			
4 - 5	8	7	10			
5 - 6	6	6	7			
6 - 7	19	20	20			
7 - 8	63	59	59			
8 - 9	161	150	156			
9 - 10	47	62	71			
10 - 11	72	51	67			
11 - 12	80	61	79			
12 - 13	80	71	70			
13 - 14	72	76	82			
14 - 15	124	123	98			
15 - 16	109	122	143			
16 - 17	170	156	150			
17 - 18	144	143	134			
18 - 19	104	88	81			
19 - 20	65	74	90			
20 - 21	63	61	60			
21 - 22	43	45	47			
22 - 23	40	38	35			
23 - 24	21	29	27			
Day Total	1507	1456	1499			

15-Minute Volumes

Time Start	Tue	Wed	Thu				Time Start	Tue	Wed	Thu			
	Apr 2	Apr 3	Apr 4					Apr 2	Apr 3	Apr 4			
0:00	1	5	4				12:00	23	15	19			
0:15	6	3	0				12:15	19	22	19			
0:30	2	0	3				12:30	21	18	17			
0:45	0	1	0				12:45	17	16	15			
1:00	0	1	1				13:00	14	15	16			
1:15	1	1	0				13:15	21	14	21			
1:30	0	0	0				13:30	19	22	26			
1:45	0	0	0				13:45	18	25	19			
2:00	1	2	1				14:00	22	26	18			
2:15	1	0	2				14:15	35	34	28			
2:30	1	0	0				14:30	37	31	23			
2:45	1	0	0				14:45	30	32	29			
3:00	1	0	1				15:00	17	31	37			
3:15	0	0	1				15:15	34	33	34			
3:30	1	0	0				15:30	29	32	38			
3:45	0	1	0				15:45	29	26	34			
4:00	2	2	1				16:00	41	37	30			
4:15	2	3	3				16:15	33	35	32			
4:30	0	1	2				16:30	46	46	42			
4:45	4	1	4				16:45	50	38	46			
5:00	2	1	0				17:00	35	35	53			
5:15	0	1	1				17:15	42	35	33			
5:30	0	1	2				17:30	45	37	29			
5:45	4	3	4				17:45	22	36	19			
6:00	3	3	4				18:00	29	20	26			
6:15	2	3	3				18:15	17	21	19			
6:30	6	5	6				18:30	31	23	19			
6:45	8	9	7				18:45	27	24	17			
7:00	8	12	10				19:00	19	23	20			
7:15	10	9	2				19:15	15	19	23			
7:30	19	15	21				19:30	11	14	21			
7:45	26	23	26				19:45	20	18	26			
8:00	35	34	27				20:00	13	16	21			
8:15	48	45	43				20:15	25	18	12			
8:30	55	50	66				20:30	9	15	15			
8:45	23	21	20				20:45	16	12	12			
9:00	15	14	17				21:00	9	10	15			
9:15	10	15	17				21:15	16	13	12			
9:30	16	15	22				21:30	11	10	8			
9:45	6	18	15				21:45	7	12	12			
10:00	18	14	17				22:00	6	9	9			
10:15	14	7	16				22:15	16	14	11			
10:30	14	14	17				22:30	7	7	5			
10:45	26	16	17				22:45	11	8	10			
11:00	16	14	22				23:00	9	7	8			
11:15	20	18	15				23:15	3	9	8			
11:30	24	10	21				23:30	7	5	6			
11:45	20	19	21				23:45	2	8	5			



Site notes:

Douglas St between Mckenzie Ave and Rogers Ave

Southbound

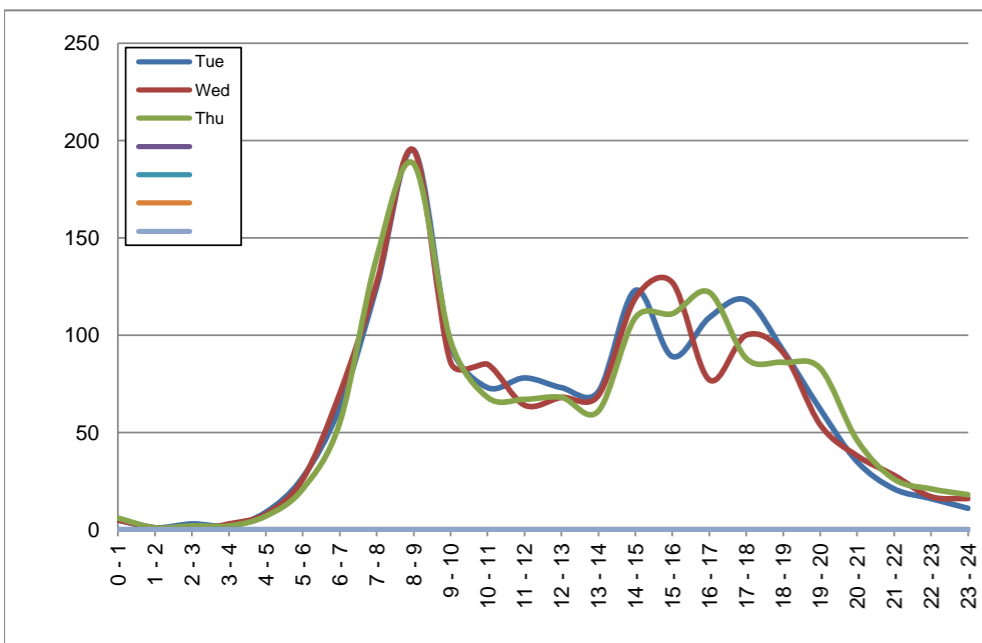
April 2, 2019 to April 4, 2019

Hourly Volumes

Time Period	Tue	Wed	Thu				
	Apr 2	Apr 3	Apr 4				
0 - 1	5	5	6				
1 - 2	1	1	1				
2 - 3	3	0	2				
3 - 4	2	3	2				
4 - 5	9	8	7				
5 - 6	27	26	21				
6 - 7	63	70	55				
7 - 8	125	127	140				
8 - 9	195	195	188				
9 - 10	95	86	97				
10 - 11	73	85	68				
11 - 12	78	64	67				
12 - 13	73	68	68				
13 - 14	71	69	61				
14 - 15	123	119	109				
15 - 16	89	127	111				
16 - 17	109	77	122				
17 - 18	118	100	88				
18 - 19	92	91	86				
19 - 20	62	54	83				
20 - 21	35	38	46				
21 - 22	21	28	26				
22 - 23	16	17	21				
23 - 24	11	16	18				
Day Total	1496	1474	1493				

15-Minute Volumes

Time Start	Tue	Wed	Thu				
	Apr 2	Apr 3	Apr 4				
0:00	2	2	3				
0:15	2	1	2				
0:30	1	1	1				
0:45	0	1	0				
1:00	0	0	0				
1:15	0	0	1				
1:30	1	0	0				
1:45	0	1	0				
2:00	0	0	0				
2:15	0	0	0				
2:30	2	0	0				
2:45	1	0	2				
3:00	2	1	0				
3:15	0	0	0				
3:30	0	1	0				
3:45	0	1	2				
4:00	0	0	0				
4:15	1	0	0				
4:30	3	3	3				
4:45	5	5	4				
5:00	2	4	2				
5:15	5	6	8				
5:30	9	8	4				
5:45	11	8	7				
6:00	10	13	8				
6:15	11	10	13				
6:30	17	22	10				
6:45	25	25	24				
7:00	24	38	37				
7:15	25	24	30				
7:30	38	30	38				
7:45	38	35	35				
8:00	35	31	43				
8:15	52	54	42				
8:30	74	80	73				
8:45	34	30	30				
9:00	31	21	27				
9:15	19	20	20				
9:30	23	23	35				
9:45	22	22	15				
10:00	23	22	16				
10:15	11	17	17				
10:30	23	29	22				
10:45	16	17	13				
11:00	16	15	18				
11:15	15	14	21				
11:30	26	14	15				
11:45	21	21	13				
12:00	18	17	15				
12:15	17	14	15				
12:30	15	22	15				
12:45	23	15	23				
13:00	17	19	9				
13:15	14	16	18				
13:30	14	12	12				
13:45	26	22	22				
14:00	21	26	22				
14:15	21	19	23				
14:30	27	23	14				
14:45	54	51	50				
15:00	24	35	31				
15:15	21	34	20				
15:30	22	31	28				
15:45	22	27	32				
16:00	32	20	29				
16:15	30	24	30				
16:30	23	16	29				
16:45	24	17	34				
17:00	34	26	20				
17:15	30	24	26				
17:30	29	26	24				
17:45	25	24	18				
18:00	22	14	21				
18:15	28	24	23				
18:30	21	25	21				
18:45	21	28	21				
19:00	11	12	21				
19:15	16	14	15				
19:30	19	15	24				
19:45	16	13	23				
20:00	13	15	11				
20:15	6	9	10				
20:30	9	8	12				
20:45	7	6	13				
21:00	6	8	7				
21:15	3	4	6				
21:30	10	6	5				
21:45	2	10	8				
22:00	4	3	4				
22:15	3	7	8				
22:30	5	3	3				
22:45	4	4	6				
23:00	6	8	5				
23:15	2	2	6				
23:30	2	3	2				
23:45	1	3	5				



Site notes:

Vehicle Speed Summary

Saanich Engineering Department

Count Id: C0019-01

Filename: Douglas St between Mckenzie Ave and Rogers Ave-Apr-2019.xlsm

Location: Douglas St between Mckenzie Ave and Rogers Ave

Note: McKenzie Ave and Rogers Ave

Direction: **North-South**

Dates: **April 01, 2019 To April 05, 2019**

Filtered data

AVG. SPEED	35 mph	57 km/h
50 % SPEED	36 mph	58 km/h
85 % SPEED	41 mph	66 km/h
95 % SPEED	45 mph	72 km/h

Location Map



Douglas St between Mckenzie Ave and Rogers Ave

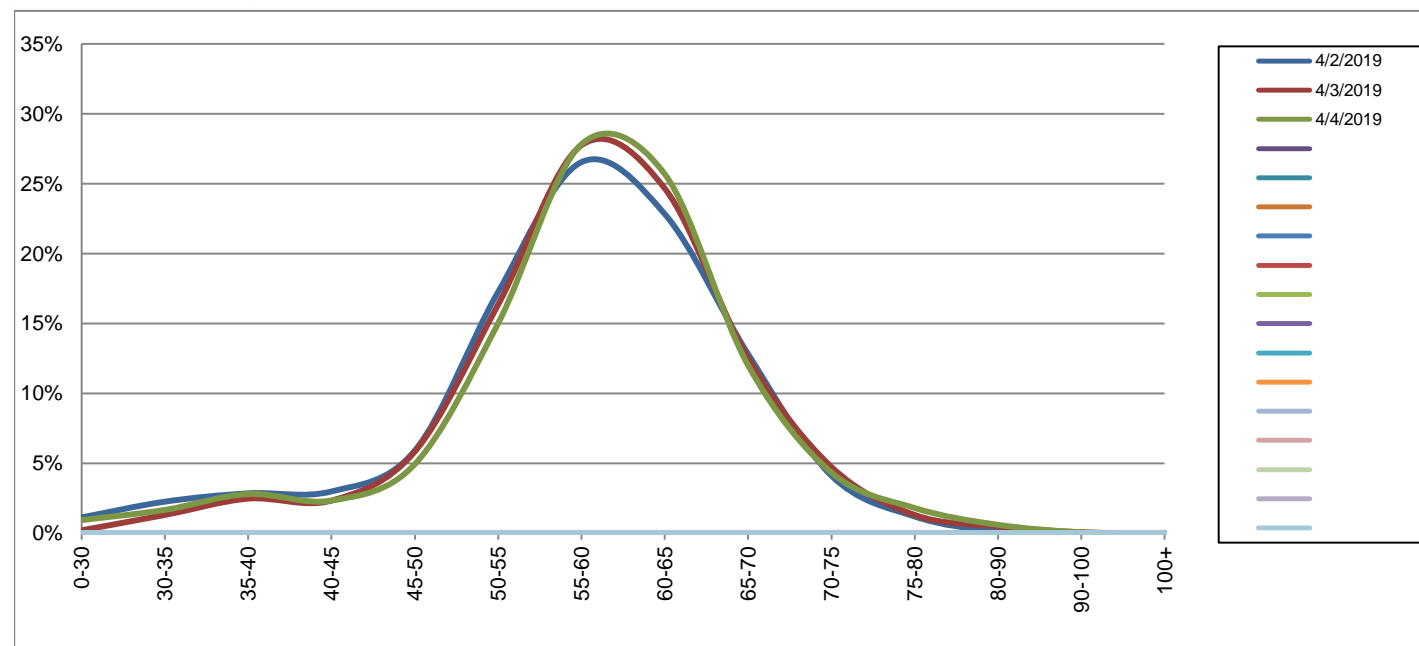
Northbound

April 2, 2019 to April 4, 2019

Daily Speed Bin Percentages														Daily Speed Bin Volumes														Total	Avg.	
Bin #	1	2	3	4	5	6	7	8	9	10	11	12	13	14	1	2	3	4	5	6	7	8	9	10	11	12	13	14	Volume	Speed
Bin Speeds	0-30	30-35	35-40	40-45	45-50	50-55	55-60	60-65	65-70	70-75	75-80	80-90	90-100	100+	0-30	30-35	35-40	40-45	45-50	50-55	55-60	60-65	65-70	70-75	75-80	80-90	90-100	100+		
4/2/2019	1.1%	2.3%	2.9%	3.0%	5.9%	17.3%	26.5%	22.8%	12.8%	4.1%	1.2%	0.1%	0.0%	0.0%	17	34	43	45	89	260	400	344	193	62	18	2	0	0	1507	57
4/3/2019	0.2%	1.3%	2.5%	2.3%	5.8%	16.3%	27.7%	24.7%	12.5%	4.7%	1.3%	0.5%	0.1%	0.0%	3	19	36	34	85	238	404	359	182	69	19	7	1	0	1456	58
4/4/2019	0.9%	1.7%	2.8%	2.3%	4.9%	15.0%	27.8%	25.7%	12.0%	4.3%	1.8%	0.6%	0.1%	0.0%	14	25	42	35	74	225	417	385	180	65	27	9	1	0	1499	58
Total	0.8%	1.7%	2.7%	2.6%	5.6%	16.2%	27.4%	24.4%	12.4%	4.4%	1.4%	0.4%	0.0%	0.0%	34	78	121	114	248	723	1221	1088	555	196	64	18	2	0	4462	58

Speed Data Summary

Bin #	1	2	3	4	5	6	7	8	9	10	11	12	13	14	Total
Bin Speeds	0-30	30-35	35-40	40-45	45-50	50-55	55-60	60-65	65-70	70-75	75-80	80-90	90-100	100+	
Survey Total	34	78	121	114	248	723	1221	1088	555	196	64	18	2	0	4462
% Total	0.8%	1.7%	2.7%	2.6%	5.6%	16.2%	27.4%	24.4%	12.4%	4.4%	1.4%	0.4%	0.0%	0.0%	100%
Accumulated %	0.8%	2.5%	5.2%	7.8%	13.3%	29.5%	56.9%	81.3%	93.7%	98.1%	99.6%	100.0%	100.0%	100%	
Inverse Accum. %	99.2%	97.5%	94.8%	92.2%	86.7%	70.5%	43.1%	18.7%	6.3%	1.9%	0.4%	0.0%	0.0%	0.0%	
Average Speed	58 KM/H														



Site notes:

Douglas St between Mckenzie Ave and Rogers Ave

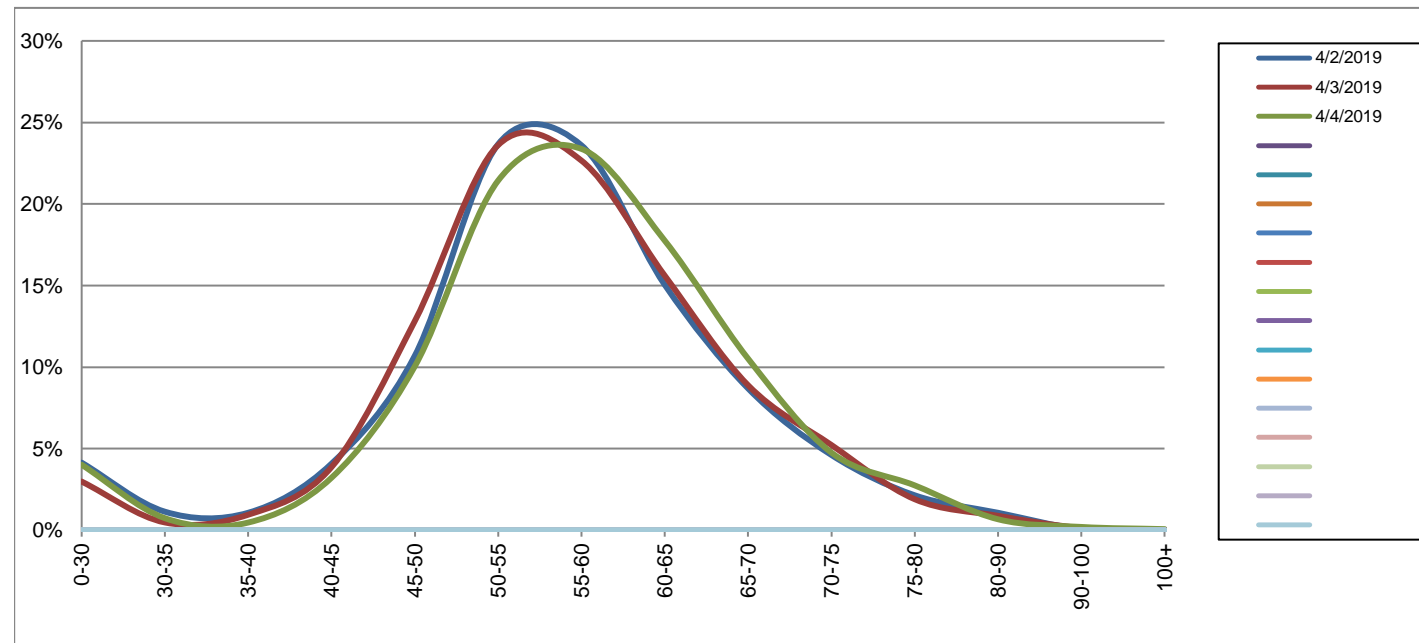
Southbound

April 2, 2019 to April 4, 2019

Daily Speed Bin Percentages															Daily Speed Bin Volumes														Total	Avg.
Bin #	1	2	3	4	5	6	7	8	9	10	11	12	13	14	1	2	3	4	5	6	7	8	9	10	11	12	13	14	Volume	Speed
Bin Speeds	0-30	30-35	35-40	40-45	45-50	50-55	55-60	60-65	65-70	70-75	75-80	80-90	90-100	100+	0-30	30-35	35-40	40-45	45-50	50-55	55-60	60-65	65-70	70-75	75-80	80-90	90-100	100+		
4/2/2019	4.1%	1.1%	1.1%	4.1%	10.7%	23.7%	23.6%	15.0%	8.7%	4.6%	2.1%	1.1%	0.1%	0.0%	62	17	16	61	160	354	353	225	130	69	32	16	1	0	1496	55
4/3/2019	3.0%	0.5%	0.9%	3.9%	12.8%	23.6%	22.7%	15.6%	8.9%	5.2%	1.9%	0.9%	0.1%	0.0%	44	7	14	57	189	348	334	230	131	77	28	13	2	0	1474	56
4/4/2019	4.0%	0.7%	0.5%	3.2%	10.0%	21.4%	23.4%	17.7%	10.5%	4.8%	2.7%	0.7%	0.2%	0.1%	60	11	7	48	150	320	349	265	157	71	41	10	3	1	1493	56
Total	3.7%	0.8%	0.8%	3.7%	11.2%	22.9%	23.2%	16.1%	9.4%	4.9%	2.3%	0.9%	0.1%	0.0%	166	35	37	166	499	1022	1036	720	418	217	101	39	6	1	4463	56

Speed Data Summary

Bin #	1	2	3	4	5	6	7	8	9	10	11	12	13	14	Total
Bin Speeds	0-30	30-35	35-40	40-45	45-50	50-55	55-60	60-65	65-70	70-75	75-80	80-90	90-100	100+	
Survey Total	166	35	37	166	499	1022	1036	720	418	217	101	39	6	1	4463
% Total	3.7%	0.8%	0.8%	3.7%	11.2%	22.9%	23.2%	16.1%	9.4%	4.9%	2.3%	0.9%	0.1%	0.0%	100%
Accumulated %	3.7%	4.5%	5.3%	9.1%	20.2%	43.1%	66.3%	82.5%	91.8%	96.7%	99.0%	99.8%	100.0%	100%	
Inverse Accum. %	96.3%	95.5%	94.7%	90.9%	79.8%	56.9%	33.7%	17.5%	8.2%	3.3%	1.0%	0.2%	0.0%	0.0%	
Average Speed	56 KM/H														



Site notes:

Douglas St between Mckenzie Ave and Rogers Ave

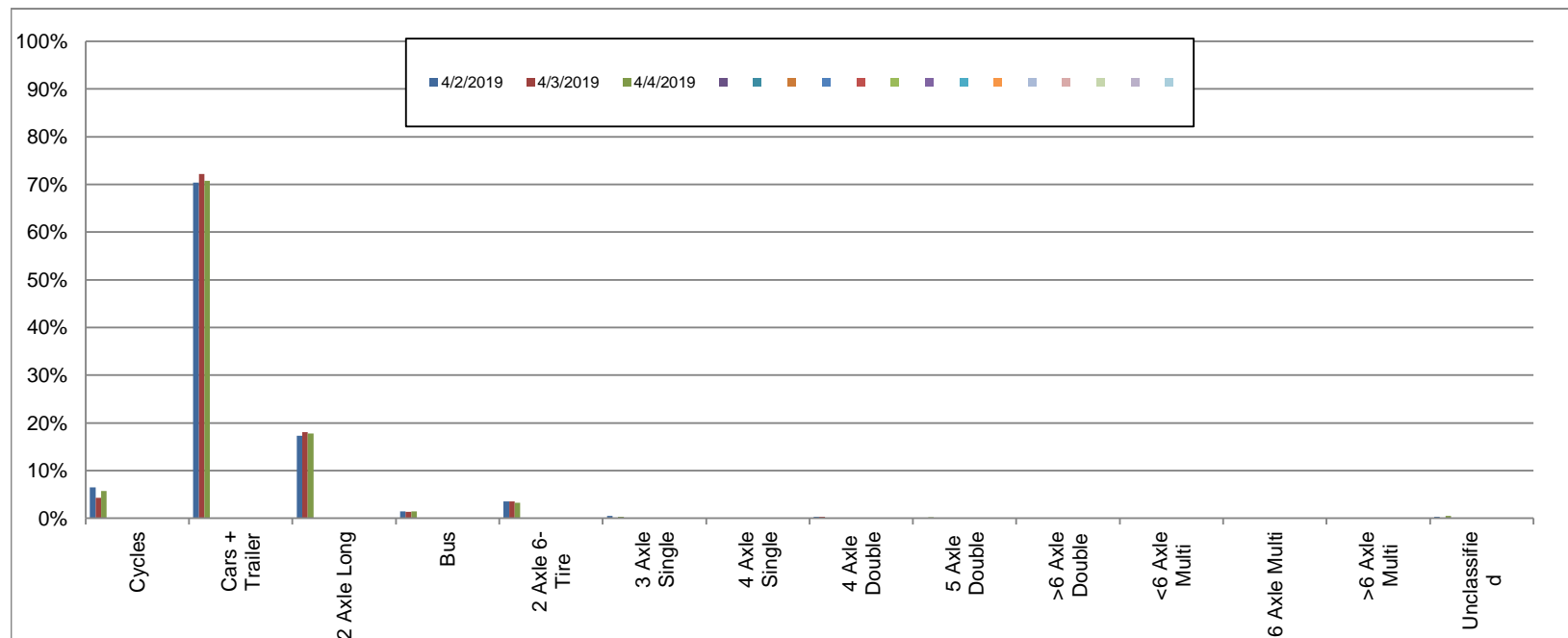
Northbound

April 2, 2019 to April 4, 2019

Daily Class Bin Percentages															Daily Class Bin Volumes											Total Volume				
Bin #	1	2	3	4	5	6	7	8	9	10	11	12	13	14	1	2	3	4	5	6	7	8	9	10	11		12	13	14	
Bin Class	Cycles	Cars + Trailer	2 Axle Long	Bus	2 Axle 6-Tire	3 Axle Single	4 Axle Single	4 Axle Double	5 Axle Double	>6 Axle Double	<6 Axle Multi	6 Axle Multi	>6 Axle Multi	Unclassified	Cycles	Cars + Trailer	2 Axle Long	Bus	2 Axle 6-Tire	3 Axle Single	4 Axle Single	4 Axle Double	5 Axle Double	>6 Axle Double	<6 Axle Multi	6 Axle Multi	>6 Axle Multi	Unclassified		
4/2/2019	6.4%	70.3%	17.3%	1.4%	3.5%	0.5%	0.0%	0.3%	0.0%	0.0%	0.0%	0.0%	0.0%	0.3%	97	1060	260	21	53	7	0	4	0	0	0	0	0	0	5	1507
4/3/2019	4.3%	72.2%	18.1%	1.3%	3.6%	0.1%	0.0%	0.3%	0.1%	0.0%	0.0%	0.0%	0.0%	0.1%	62	1051	263	19	52	2	0	5	1	0	0	0	0	1	1456	
4/4/2019	5.7%	70.8%	17.7%	1.5%	3.3%	0.3%	0.0%	0.1%	0.2%	0.0%	0.0%	0.0%	0.0%	0.5%	86	1061	266	22	49	4	0	1	3	0	0	0	0	7	1499	
Total	5.5%	71.1%	17.7%	1.4%	3.5%	0.3%	0.0%	0.2%	0.1%	0.0%	0.0%	0.0%	0.0%	0.3%	245	3172	789	62	154	13	0	10	4	0	0	0	0	13	4462	

Class Data Summary

Bin #	1	2	3	4	5	6	7	8	9	10	11	12	13	14	Total Volume
Bin Class	Cycles	Cars + Trailer	2 Axle Long	Bus	2 Axle 6-Tire	3 Axle Single	4 Axle Single	4 Axle Double	5 Axle Double	>6 Axle Double	<6 Axle Multi	6 Axle Multi	>6 Axle Multi	Unclassified	Total Volume
Survey Total	245	3172	789	62	154	13	0	10	4	0	0	0	0	13	4462
% Total	5.5%	71.1%	17.7%	1.4%	3.5%	0.3%	0.0%	0.2%	0.1%	0.0%	0.0%	0.0%	0.0%	0.3%	100%
Accumulated %	5.5%	76.6%	94.3%	95.7%	99.1%	99.4%	99.4%	99.6%	99.7%	99.7%	99.7%	99.7%	99.7%	100.0%	
Inv. Accum. %	94.5%	23.4%	5.7%	4.3%	0.9%	0.6%	0.6%	0.4%	0.3%	0.3%	0.3%	0.3%	0.3%	0.0%	



Classification Descriptions

Bin #	Bin Description
1	Motorcycles
2	Passenger cars, including those with recreational trailers
3	2-axle pick-ups, vans, and RVs, including those with recreational trailers
4	Buses
5	2-axle, 6-tire single units
6	3-axle single units
7	4-axle single units
8	3-axle or 4-axle double unit
9	5-axle double unit
10	6-, 7-, or 8-axle double unit
11	5-axle multiple unit
12	6-axle multiple unit
13	7-or-more-axle multiple unit
14	Vehicles that could not be classified

Site notes:

Douglas St between Mckenzie Ave and Rogers Ave

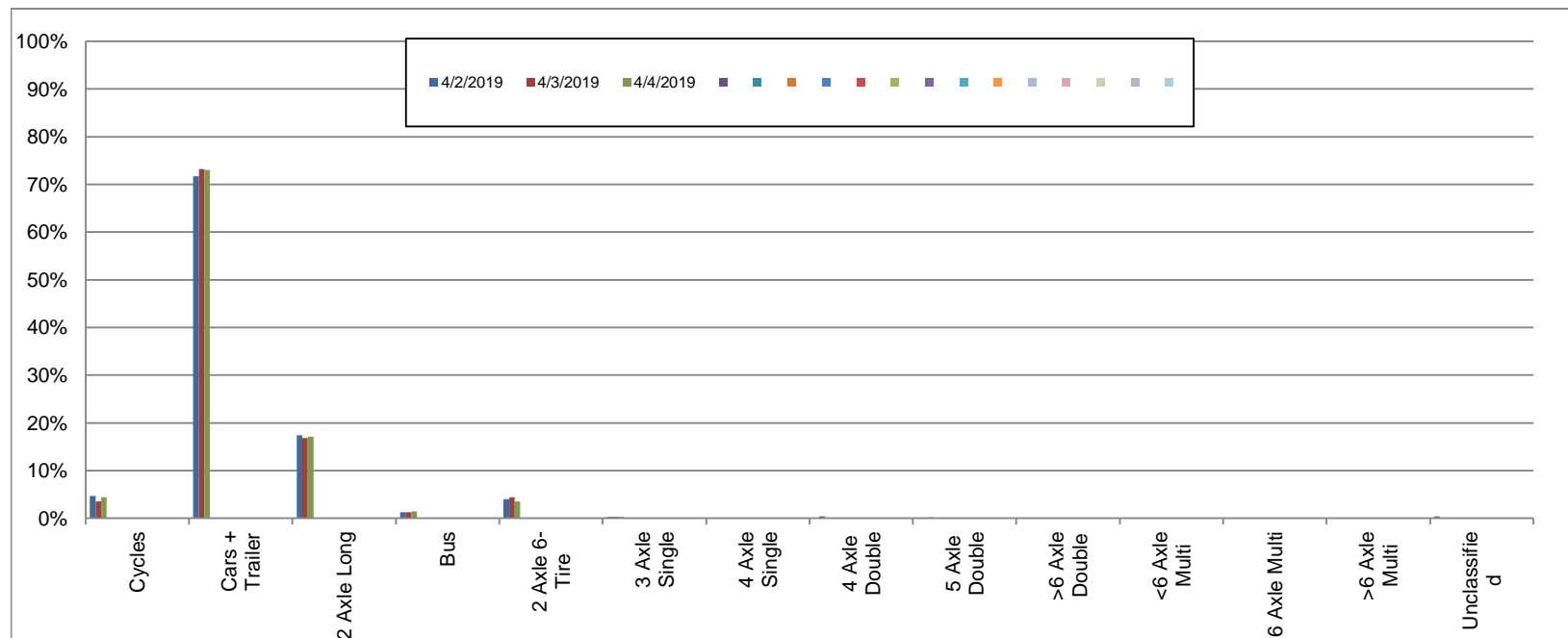
Southbound

April 2, 2019 to April 4, 2019

Daily Class Bin Percentages															Daily Class Bin Volumes											Total Volume				
Bin #	1	2	3	4	5	6	7	8	9	10	11	12	13	14	1	2	3	4	5	6	7	8	9	10	11		12	13	14	
Bin Class	Cycles	Cars + Trailer	2 Axle Long	Bus	2 Axle 6-Tire	3 Axle Single	4 Axle Single	4 Axle Double	5 Axle Double	>6 Axle Double	<6 Axle Multi	6 Axle Multi	>6 Axle Multi	Unclassified	Cycles	Cars + Trailer	2 Axle Long	Bus	2 Axle 6-Tire	3 Axle Single	4 Axle Single	4 Axle Double	5 Axle Double	>6 Axle Double	<6 Axle Multi	6 Axle Multi	>6 Axle Multi	Unclassified		
4/2/2019	4.7%	71.7%	17.4%	1.3%	4.0%	0.3%	0.0%	0.1%	0.1%	0.0%	0.0%	0.0%	0.0%	0.4%	70	1073	260	19	60	5	0	2	1	0	0	0	0	0	6	1496
4/3/2019	3.5%	73.2%	16.8%	1.2%	4.4%	0.3%	0.0%	0.4%	0.0%	0.0%	0.0%	0.0%	0.0%	0.1%	52	1079	248	18	65	4	0	6	0	0	0	0	0	0	2	1474
4/4/2019	4.4%	73.1%	17.1%	1.4%	3.5%	0.3%	0.0%	0.0%	0.2%	0.0%	0.0%	0.0%	0.0%	0.1%	65	1091	255	21	52	4	0	0	3	0	0	0	0	2	1493	
Total	4.2%	72.7%	17.1%	1.3%	4.0%	0.3%	0.0%	0.2%	0.1%	0.0%	0.0%	0.0%	0.0%	0.2%	187	3243	763	58	177	13	0	8	4	0	0	0	0	10	4463	

Class Data Summary

Bin #	1	2	3	4	5	6	7	8	9	10	11	12	13	14	Total Volume
Bin Class	Cycles	Cars + Trailer	2 Axle Long	Bus	2 Axle 6-Tire	3 Axle Single	4 Axle Single	4 Axle Double	5 Axle Double	>6 Axle Double	<6 Axle Multi	6 Axle Multi	>6 Axle Multi	Unclassified	Total Volume
Survey Total	187	3243	763	58	177	13	0	8	4	0	0	0	0	10	4463
% Total	4.2%	72.7%	17.1%	1.3%	4.0%	0.3%	0.0%	0.2%	0.1%	0.0%	0.0%	0.0%	0.0%	0.2%	100%
Accumulated %	4.2%	76.9%	94.0%	95.2%	99.2%	99.5%	99.5%	99.7%	99.8%	99.8%	99.8%	99.8%	99.8%	100.0%	
Inv. Accum. %	95.8%	23.1%	6.0%	4.8%	0.8%	0.5%	0.5%	0.3%	0.2%	0.2%	0.2%	0.2%	0.2%	0.0%	



Classification Descriptions

Bin #	Bin Description
1	Motorcycles
2	Passenger cars, including those with recreational trailers
3	2-axle pick-ups, vans, and RVs, including those with recreational trailers
4	Buses
5	2-axle, 6-tire single units
6	3-axle single units
7	4-axle single units
8	3-axle or 4-axle double unit
9	5-axle double unit
10	6-, 7-, or 8-axle double unit
11	5-axle multiple unit
12	6-axle multiple unit
13	7-or-more-axle multiple unit
14	Vehicles that could not be classified

Site notes: